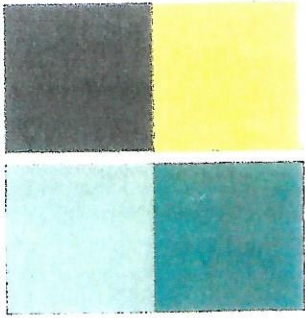


4-Patch Lattice

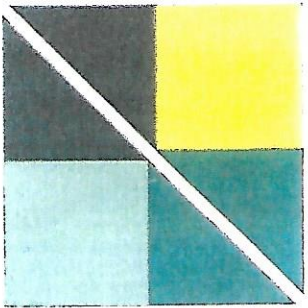
2A



2 MAKE BLOCKS

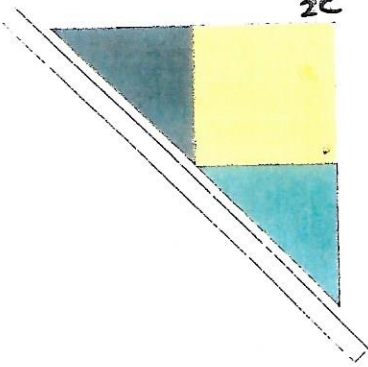
Make a 4-patch block by sewing (4) 5" squares together. Begin by sewing 2 squares together into a pair. **Make 2 pair.** Press the seam allowances in opposite directions then sew the 2 pairs together. **2A**

2B



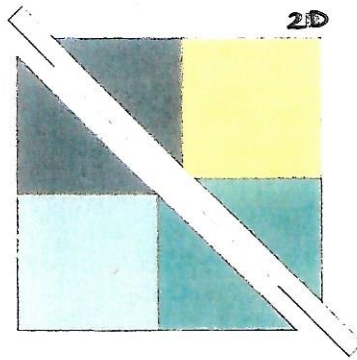
Slice the 4-patch block from corner to corner once on the diagonal. **2B**

2C



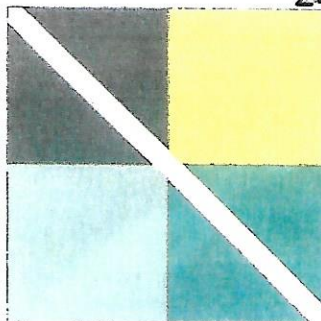
Fold a 1½" x 14" rectangle in half. Mark the fold by finger-pressing a crease in place. Align the crease in the rectangle with the center point of the sliced 4-patch and pin. Pin in several places along the length of the strip. Stitch the rectangle to the sliced 4-patch using a ¼" seam allowance. **2C**

2D



Repeat for the opposite side of the sliced 4-patch. **2D**

2E



trim each to 9½" square. **2E**